



Rita Angus, *Central Otago*, 1954-1956



Andy Goldsworthy, *Rowan Leaves Laid Around Hole*, 1987

The images above are both artworks from two different artists.

The first is a **landscape painting** by a New Zealand artist called Rita Angus. Rita Angus was actually born in Hastings! Her work is a painting of a landscape in the South Island, and is called *Central Otago*.

The second image is slightly different, and is an example of **Environmental Art**. This is a photograph of an artwork created by British artist, **Andy Goldsworthy**. This isn't a painting or a sculpture, but a collection of differently coloured leaves that have been carefully placed around a hole. This work has been created in the outdoors, and Andy has captured it through photography.

Have a look at the two artworks, and note five things that are similar, and five things that are different about the works. How have they been made? What colours are used? Are they different from artworks you have seen before?

Five similarities between the artworks

---

---

---

---

---

---

---

---

Five differences between the artworks

---

---

---

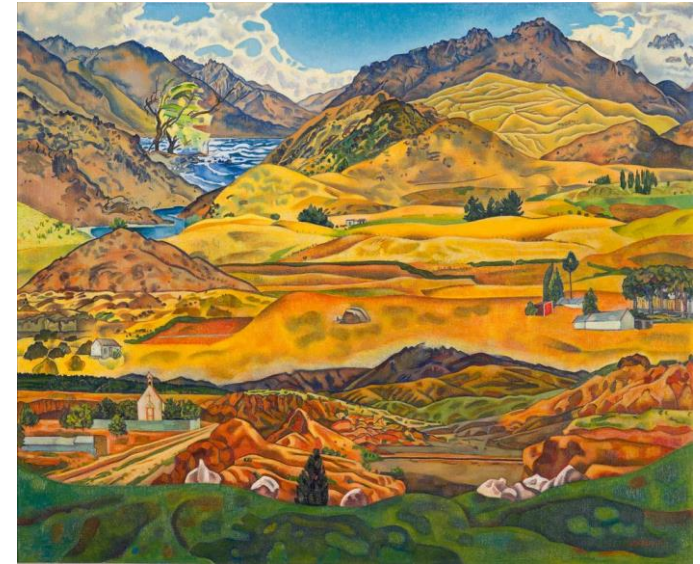
---

---

---

---

---



Rita Angus, *Central Otago*, 1954-1956



Andy Goldsworthy, *Rowan Leaves Laid Around Hole*, 1987